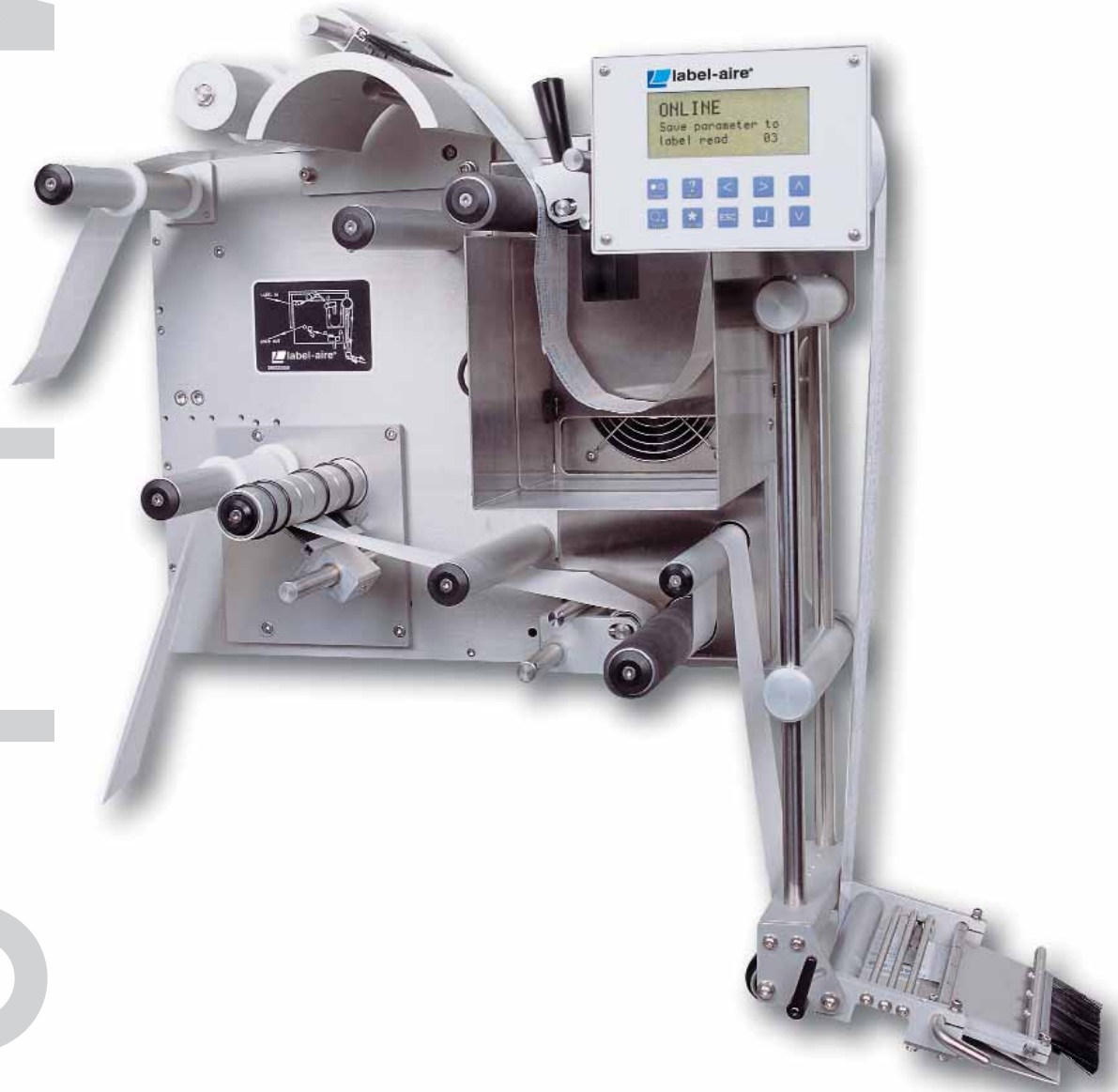


Model 3155



3155 Wipe-On

Primary Applicator

Have a Label-Aire Authorized Distributor
contact you. Visit www.label-aire.com.



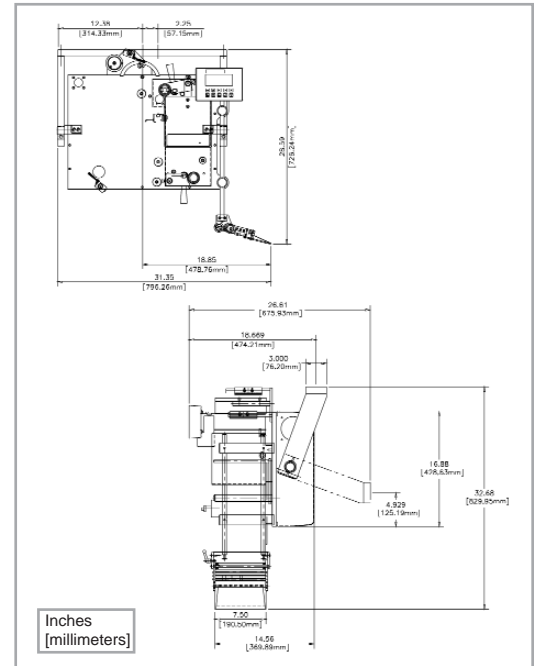
3155 Wipe-On Specifications

The Label-Aire® Model 3155 makes labeling easier and faster...making you more profitable.

The Model 3155 Wipe-On labeler delivers on its promise of speed, accuracy, and ease of use. And that translates into lower operating costs and increased productivity for your business.

Speeds up to 5,000 inches (127 m) of web per minute make the Model 3155 an ideal choice for demanding applications requiring high speed and precision. Advanced features include Automatic Speed Following (ASF) which allows product surface profiling, ensuring wrinkle-free labeling on even the most difficult product shapes and label materials (optional encoder required). Zero Downtime Labeling allows your production to continue without costly interruptions. Product/label queuing and missing label compensation virtually eliminate unlabeled products or missing lot and expiration codes.

Put this high-speed wipe-on pressure-sensitive technology to work for you all day, every day. The Model 3155 Wipe-On labeler is built to meticulous quality standards and designed to withstand the most demanding operation.



Stated dimensions are approximations. Please consult factory if dimensions are required for line integration.

3155 Wipe-On Advanced Features	
Automatic setup	Includes multiple programmable label pages for easy changeovers to different label sizes.
Stepper motor drive	For precise starting/stopping, increased reliability, wider range speed variability, and lower maintenance.
R3 digital display	Select from five languages (English, French, German, Italian, Spanish), domestic or CE (European) configurations, standard/metric unit display and detailed alarm messages. Can rotate 360°.
Automatic Speed Following (ASF)	Labels are accurately applied even through extreme changes in product line speed.
Quick-action collapsible rewind	Allows easy removal of scrap liner.

Dimensions:

Height: 28.6" (726 mm)
 Length: 26.6" (676 mm)
 Width: 31.4" (798 mm)

Weight:

Approx. 170 lbs. (81 kg)

Standard Label Dimensions:

Label Width: Up to 7.13" (181 mm)
 Label Length: 5" (13 mm)

Dispense Speed:

5,000" (127 m) of web per minute

Label Dispense Accuracy:

Up to +/- 1/64" (.4 mm)

Electrical:

115 Volts AC 60 Hz 5 Amps.
 220 Volts AC 50 Hz optional

Options:

Encoder kit for Automatic Speed Following
 Zero Downtime Labeling
 Hot stamp imprinter
 Clear label sensor
 Model 2700 T-Base stand
Consult factory for additional options.



Headquarters
 550 Burning Tree Road
 Fullerton, CA 92833 USA

o 714.449.5155
 f 714.526.0300
 e info@label-aire.com
 w www.label-aire.com

Europe
 Sjøellandsvej 27A
 DK-9500 Hobro, Denmark

o +45.9657.0063
 f +45.9657.0064
 e info@label-aire.com
 w www.label-aire.com

Asia
 No. 10, Lane 228, Taisi S. Road
 Longjing Township
 Taichung County 434, Taiwan

o +886.4.2395.5684
 f +886.4.2395.8007
 e info@label-aire.com
 w www.label-aire.com

Distributed by:

